

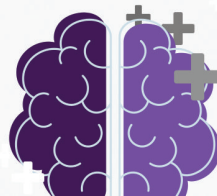
# DEPARTMENT OF SOCIOLOGY, PSYCHOLOGY AND SOCIAL WORK

## DEPARTMENT OVERVIEW

The Department of Sociology Psychology and Social Work -SPSW has been offering quality teaching and training to students enabling them to become working professionals for over 50 years. Establishing Sociology as the main discipline the Department under the guidance of some of the greatest pioneers incorporated other disciplines including Social Policy and Development, Labour and Employment Relations, Demography, Psychology, Social Work and Social Anthropology. Given the depth of qualitative research and analytical skills, with an offer at the undergraduate and graduate levels, our students are well equipped for work in both the private and public sectors; locally, regionally and internationally. Our strategy is to expand the depth of knowledge of our students by inspiring them to go further and to remind them that the SPSW is the place to manifest their dreams!"

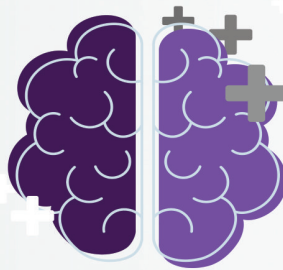
## ENGLISH LANGUAGE REQUIREMENT

English Language is compulsory for admission to all programmes. The English Language Proficiency Test (ELPT) is used to assess whether persons applying to pursue undergraduate degree programmes at the UWI, Mona Campus possess a satisfactory level of writing and reading proficiency in English for university academic purposes. The results of applicants who pass the test will remain valid for a period of five (5) years. For more information on test registration and exemption from sitting ELPT visit our Faculty website.



## ENTRY

REQUIREMENT:  
FULL TIME (3 YEARS)



Applicants must satisfy the requirements in (a) or (b) or (c) below:

(a) Five (5) CXC/CSEC (General Proficiency Grades I-III from June 1998) or GCE/ BGCSE O'Level (Grades A-C) with compulsory subjects: Mathematics and English Language in addition to two (2) CAPE subjects (Units 1 and 2) or GCE/BGCSE A' Level passes in a minimum of two (2) subjects; or

(b) An Associate degree, Diploma and/or Certificate from other approved tertiary institutions having attained a B+ average or a minimum GPA of 2.5; or

(c) High School Grade 12 transcript with a minimum GPA of 3.0 and a minimum SAT I score of 1700 plus a minimum of two (2) SAT II subjects at a score of 500 or above or successful completion of Advanced Placement Courses or the International Baccalaureate programme.

## ENTRY

REQUIREMENT:  
PART TIME (4 YEARS)

Applicants must satisfy the requirements in (a) or (b) or (c) below:

(a) Five (5) CXC/CSEC (General Proficiency Grades I-III from June 1998) or GCE/ BGCSE O'Level (Grades A-C) with compulsory subjects: Mathematics and English Language in addition to one (1) CAPE subject (Units 1 and 2) or one (1) GCE/BGCSE A'Level; or

(b) High School Grade 12 transcript with a minimum GPA of 2.5 and a minimum SAT I score of 1500.

## DEGREES OFFERED

BSc Demography  
BSc Labour and Employment Relations  
BSc Psychology  
BSc Social Anthropology  
BSc Social Policy and Development  
BSc Social Work (Special)  
BSc Sociology

## CAREER AREAS

Anthropologist  
Clinical Psychologist  
Criminologist  
Counseling Psychologist  
Demographer  
Sociologist  
Family and School Social Worker  
Justice/Penal System Social Worker



## TESTIMONIAL

“What I loved most about psychology was the programme evaluation and monitoring. Currently, as an Assistant Professor of Education I find that what I have studied helps me within my scope of work. To new students I would recommend SPSW because it comprises a knowledgeable faculty with the desire for you to be successful.”

*Marvin Powell, BSc, MSc*

### Contact Information

The University of the West Indies

6 Ring Road

Mona, St. Andrew

Jamaica

+1 (876) 977-6267

spswork@uwimona.edu.jm

[www.mona.uwi.edu/spsw/](http://www.mona.uwi.edu/spsw/)

in



@fssuwimona



Visit the faculty website @<https://www.mona.uwi.edu/socsci/> for more info.